

Hose reel

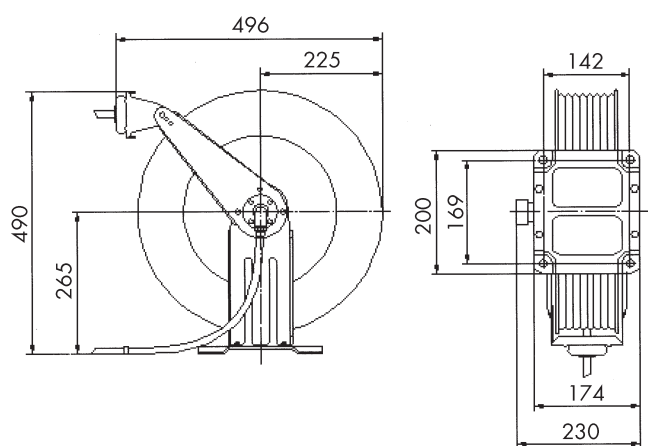


HOSE REEL | **SERIE 820**

Due to the exceptionally robust and galvanised double steel frame, the series 820 is used primarily in areas where the hoses need to be unreeled and reeled fairly continuously. The drum is made of powder-coated steel, guaranteeing a long service life.

Here too, the spring has lifetime lubrication and requires no maintenance. The flexible hose extension arm with four guide rollers also creates various assembly options. The reel is equipped as standard with a rubber hose, suitable for up to 100°C.

ACCESSORIES:
Swivelling wall
mount



TYPE	Fitting inch	Nominal size of hose DN	Length m	Pressure max. bar	Medium	Weight approx. kg	Order No.
L - 820-153	3/8"	9	15	20	Water, Air	17.2	G40040
L - 820-154	1/2"	12	15	20	Water, Air	20	G40041
ACCESSORIES: Swivelling plate for wall mounting 820 made of steel							G40047

Other versions and hose lengths available on request!