

## SUPER-Corrosion protection (Basic/Medium)

HD3N-trolleys have outstanding corrosion protection. All steel parts are electrolytically zinc plated. This is a must in wet rooms and in very aggressive environment. Larger flange width (size 2 – 4) are optional. Wheels fit flat and also tapered flanges!

**Capacities up to 25,000 kg on request.**

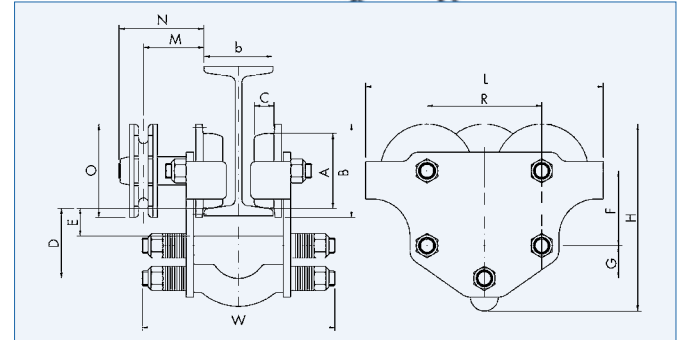
## EX-protection version (High)

Trolleys for use in environments with explosion danger (so-called ex-proof areas) are equipped with bronze wheels and sparkfree hand chains for EX-areas up to Zone 1 II 2 G IIC T4. The trolleys accord to EC-Machine Directive 2014/34/EG (Atex-guide lines).

**Many special version upon request.**

- Bogie trolleys up to 10,000 kg
- Flame zinc plating
- NIROSTA – trolleys up to 3,000 kg (non-corrosive steel)
- Rack gear trolleys up to 12,500 kg
- Person transporting trolleys – acc. EN 1808 up to 4,000 kg capacity

1 m more operation length	<b>Order No.</b>
Standard zinc plated (2.5 m total)	<b>G20118</b>
V2A (EX) rustfree (2.5 m total)	<b>G20119</b>



TYPE	Push trolley HD3N-H-EX ...	0.5	1	2	3.2	5	6.3	8	10	12.5	20
TYPE	Gear type trolley HD3N-G-EX ...	-	1	2	3.2	5	6.3	8	10	12.5	20
Capacity	kg	500	1,000	2,000	3,200	5,000	6,300	8,000	10,000	12,500	20,000
Maximum weight of hoist	kg	100	120	250	150	300	200	550	600	150	800
Flange width b	min. / max. size 1 mm	55/102	55/102	74/127	90/143	106/156	106/156	106/156	131/195	143/222	170/212
	min. / max. size 2 mm	105/152	105/152	127/180	149/203	160/210	160/210	167/247	196/271	223/298	-
	min. / max. size 3 mm	-	156/203	190/243	203/254	210/260	210/260	248/349	272/363	299/389	-
	min. / max. size 4 mm	-	207/254	254/305	251/305	255/305	255/305	-	-	-	-
Hand chain force	daN	-	10	16	20	20	25	16	19	23	25
Hand chain operation length	m	2.5	2.5	2.5	2.5	2.5	2.5	2.5	2.5	2.5	2.5
Min. curve radius	m	1	1.5	1.6	2	2.9	2.9	3.5	3.5	3.5	3.5
A (Dimensions)	mm	45	60	80	100	125	125	160	160	160	200
B	mm	60	75	100	120	150	150	190	190	190	240
C	mm	15	18	22	25	30	30	35	35	35	50
D	mm	52	60	75	90	117	117	145	145	145	165
E	mm	15	20	27	35	40	40	45	45	45	42
F	mm	45	60	80	100	120	120	145	145	145	165
G	mm	30	30	35	40	60	60	80	80	80	100
H	mm	125	150	195	235	295	300	365	370	375	450
L	mm	150	190	255	300	375	375	450	450	450	550
M	mm	-	65	65	70	100	100	115	115	115	135
N	mm	-	90	90	95	130	130	135	135	135	170
O	mm	-	100	100	100	135	135	270	270	270	300
W	size 1 mm	160	170	215	250	275	275	b + 150	b + 150	b + 150	b + 185
	size 2 mm	210	220	265	310	330	330				
	size 3 mm	-	270	330	360	380	380				
	size 4 mm	-	325	390	410	425	425				
R	mm	75	99	123	144	174	174	220	220	220	272
S	size 1 mm	20	20	30	35	40	45	40	50	55	65
	size 2 mm	20	25	35	40	45	50	45	55	60	-
	size 3 mm	-	30	35	40	50	55	50	60	65	-
	size 4 mm	-	30	40	45	50	55	-	-	-	-
Net weight HD3N-H ...	kg	3	5	11	18	33	35	85	90	95	150
Net weight HD3N-G ...	kg	-	6	12	19	35	36	90	95	100	160
<b>Version Basic/Medium</b>	<b>Order No.</b>	<b>G20120</b>	<b>G20121</b>	<b>G20122</b>	<b>G20123</b>	<b>G20124</b>	<b>G20125</b>	<b>G20126</b>	<b>G20127</b>	<b>G20128</b>	<b>G20290</b>
HD3N-H ...											
<b>Version High</b>	<b>Order No.</b>	<b>G20130</b>	<b>G20131</b>	<b>G20132</b>	<b>G20133</b>	<b>G20134</b>	<b>G20135</b>	<b>G20136</b>	<b>G20137</b>	<b>G20138</b>	<b>G20291</b>
HD3N-H ...											
<b>Version Basic/Medium</b>	<b>Order No.</b>	-	<b>G20141</b>	<b>G20142</b>	<b>G20143</b>	<b>G20144</b>	<b>G20145</b>	<b>G20146</b>	<b>G20147</b>	<b>G20148</b>	<b>G20292</b>
HD3N-G ... with 2.5 m operation length											
<b>Version High</b>	<b>Order No.</b>	-	<b>G20151</b>	<b>G20152</b>	<b>G20153</b>	<b>G20154</b>	<b>G20155</b>	<b>G20156</b>	<b>G20157</b>	<b>G20158</b>	<b>G20293</b>
HD3N-G ... with 2.5 m operation length											
Larger Flange width size 2 – 4	<b>Order No.</b>	<b>G20160</b>	<b>G20161</b>	<b>G20162</b>	<b>G20163</b>	<b>G20164</b>	<b>G20165</b>	-	-	-	-
Flame zinc plating	<b>Order No.</b>	<b>G20170</b>	<b>G20171</b>	<b>G20172</b>	<b>G20173</b>	<b>G20174</b>	<b>G20175</b>	<b>G20179</b>	<b>G20177</b>	<b>G20178</b>	<b>G20295</b>