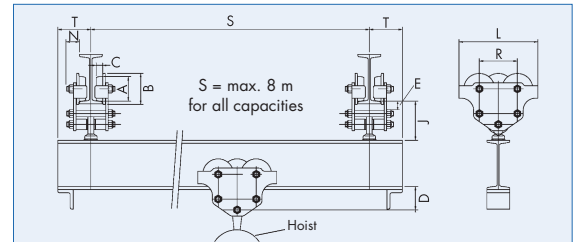


Use these crane articulated trolleys and single flange wheels to complete your crane. Please note that the crane must be designed and approved in accordance with the applicable regulations before it is put into operation. Other PLANETA components such as hoists, power supply, trolley buffers and information signs will also help you to obtain a successful acceptance of the crane and to be allowed to put the crane into operation. The required proof of statics and stability stability must also be provided



Crane articulated trolley

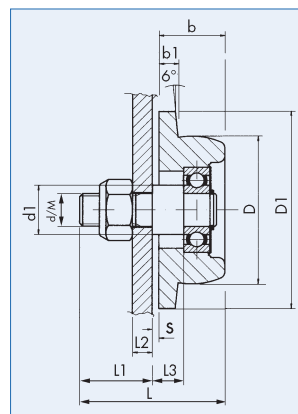
- No tilting of the trolleys due to traverse forces.
- Choose between manual drive with trolleys or electric drive with one or two speeds.
- You will find power supplies under electric hoists and accessories.
- We will be happy to supply a control system on request.



TYPE	Capacity kg	Max. Profile width mm	A mm	B mm	C mm	E mm	L mm	R mm	T mm	J max. mm	N mm	D mm	Weight Electric motor trolley kg	Order No. Manual push trolley	Order No. Electric motor trolley v=12 m/min	Order No. Electric motor trolley v=5/12 m/min
11KN	1,100	120	60	75	18	20	190	99	60	100	90	60	6	J00120	-	-
11KN	1,100	140	60	75	18	20	190	99	60	105	90	60	6	J00121	-	-
11KN	1,100	305	60	75	18	20	190	99	60	110	90	60	6	J00122	-	-
22KN	2,250	113	80	100	22	27	255	123	75	120	90	75	12	J00123	-	-
22KN	2,250	210	80	100	22	27	255	123	75	125	90	75	12	J00124	-	-
22KN	2,250	305	80	100	22	27	255	123	75	135	90	75	12	J00125	-	-
33KN	3,350	131	100	120	25	35	300	144	90	140	95	90	20	J00126	J00138	J00150
33KN	3,350	220	100	120	25	35	300	144	90	150	95	90	20	J00127	J00139	J00151
33KN	3,350	305	100	120	25	35	300	144	90	160	95	90	20	J00128	J00140	J00152
52KN	5,300	131	125	150	30	40	375	174	117	180	130	117	32	J00129	J00141	J00153
52KN	5,300	210	125	150	30	40	375	174	117	185	130	117	32	J00130	J00142	J00154
52KN	5,300	310	125	150	30	40	375	174	117	195	130	117	32	J00131	J00143	J00155

Single-flange idler wheels

- Load bearing capacities up to 7,500 kg per wheel
- Made of steel
- 4-wheel trolleys possible up to 30,000 kg.
- Supplied complete with axle, nut and ZZ ball bearing
- Each of the larger wheels has two ball bearings
- On request, solid bronze wheels can be supplied



Two versions

Price group A: Wheels normal.

Price group B: Wheels with gear rim.

TYPE	D1 Ø	D/M	d1	b	b1	L	L1	L2		L3	S	m	Z	Bearing	Exposure kN		Weight kg	Order No. (A)	Order No. (B)
								Min.	Max.						stat.	dyn.			
45	60	10	15	20	5	44	22	6	12	9	2	-	-	1	3.5	2	0.3	J00160	-
60	75	12	20	25	7	54	27	8	15	10	2	3	23	1	6	3.5	0.6	J00161	J00171
80	100	16	25	30	8	68	36	10	20	11	2	3	31	1	9.8	6.2	1.2	J00162	J00172
100	120	20	35	35	10	77	40	12	20	13	2	3	38	1	15	10	2.1	J00163	J00173
125	150	24	40	40	10	92	50	15	25	15	2	3	48	1	19.6	13.7	3.5	J00164	J00174
80S	100	16	25	30	8	68	36	10	20	4	2	3	31	2	14.7	9	1.3	J00165	J00175
125S	150	24	40	40	10	92	50	15	25	4	2	3	48	2	30	20	4	J00166	J00176
160	190	30	45	50	15	112	60	20	30	7	2	4	45	2	39.2	27.4	9	J00167	J00177
160S	190	30	45	50	15	112	60	20	30	7	2	4	45	2	47.2	33.2	9.5	J00168	J00178
200	240	36	55	70	20	147	75	25	35	9	2	4	58	2	81	60	17	J00169	J00179
200S	240	36	60	70	20	152	80	30	40	9	2	4	58	2	95	75	17.5	J00170	J00180