

A3-WH5



STAMP LIFTER | A3-WH

Thigh high quality hydraulic cylinder has a large base plate to ensure that it is stable. The pump rocker lever is easy to move and is driven by a 2-part lever with clearance for valve control. The stamping plate is corrugated and can also be unscrewed using the thread. The A3-WH is a reliable aid in the workshop and as a vehicle accessory. Protected against overloading by an overpressure valve!

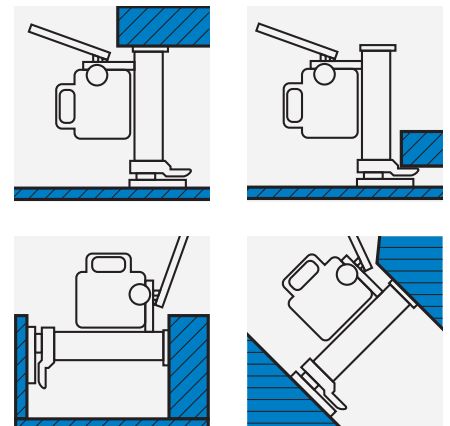
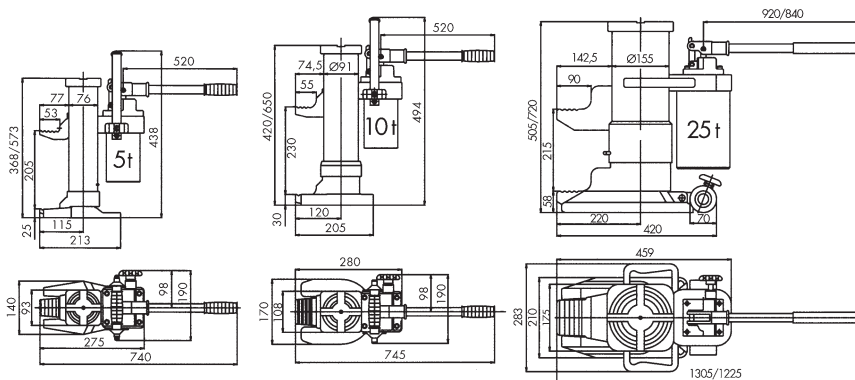
TYPE	Capacity kg	Lifting height mm	Additional unscrewable height mm	Min./Max. construction height mm	Base plate width mm	Base plate length mm	Piston diameter mm	Empty weight kg	Order No.
A3-WH2	2.000	90	50	158 - 298	93	95	23	2,2	K00001
A3-WH3	3.000	100	50	168 - 318	93	95	23	2,3	K00002
A3-WH5	5.000	125	60	195 - 380	100	105	27	3,3	K00003
A3-WH8	8.000	125	60	200 - 385	118	110	38	5	K00004
A3-WH12	12.000	125	60	215 - 400	137	133	43	6,7	K00005
A3-WH15	15.000	140	60	225 - 425	142	135	48	7,7	K00006
A3-WH20	20.000	145	60	235 - 440	162	153	48	10	K00007
A3-WH32	32.000	150	-	255 - 405	170	173	56	13	K00008
A3-WH50	50.000	180	-	285 - 465	150	188	71	21	K00009

HM 5



MACHINE HOIST | HM

This hydraulic hoist is particularly well suited to repair and maintenance work and to the installation of heavy machines. The installation position is irrelevant here. The housing can be rotated through 360 degrees and the lowering speed has precision adjustment. The integrated pressure-relief valve protects the hydraulic system against overloads. If needed, the hand lever can be removed.



TYPE	Capacity kg	Claw lifting height mm	Lifting height for the head mm	Max. Leverage kg	Weight kg	Order No.
HM 5	5.000	25 - 230	368 - 573	38	25	K00021
HM 10	10.000	30 - 260	420 - 650	40	35	K00022
HM 25	25.000	58 - 273	505 - 720	40	102	K00023