



ROPE PULLEY BLOCK | ULRB



Option: Load measuring pin

PLANETA deflection pulley blocks are designed for demanding wire rope deflections in electrically operated systems and manually operated applications and can withstand the respective full load in any desired deflection direction regardless of their mounting position.

The housings are made of bent sheet steel or welded sheet steel for higher load capacities. The rope pulleys with turned precision grooves in accordance with DIN 15061 and design for drive unit group 1Bm/M3 in accordance with DIN 15020 minimise possible wear on the rope and rope pulley.

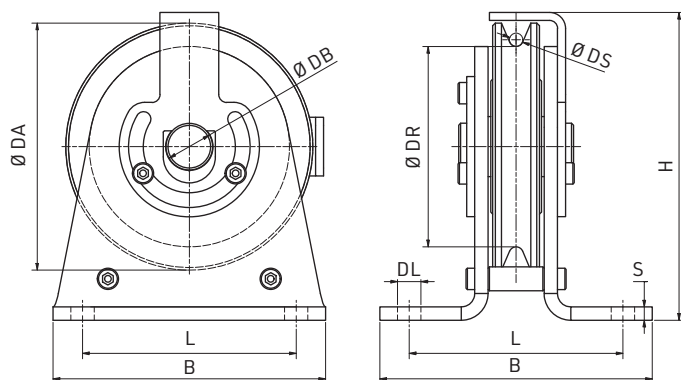
The 2RS ball bearings pressed into the rope pulley ensure maintenance-free and quiet running, while the axle holder anti-jump plates secure the bolt and prevent the rope from jumping off the rope pulley. They can also be quickly adjusted by hand to the desired deflection direction.

Technical data:

- 8 sizes, total capacities from 500 kg to 14,000 kg
- Full load at 180°-deflection in all directions possible
- Mechanism group 1Bm/M3
- Factor of Safety FoS 4

Special designs on request:

- Stainless steel version
- Mechanism group 1Am/M4 and 2m/M5 possible for H68121 – H68161
- Load measuring pin



TYPE	ULRB ...	5-75	6-90	8-120	10-150	12-180	14-210	16-240	20-304
Capacity	kg	500	1,000	2,000	3,000	5,000	7,500	10,000	14,000
Rope force with 180° turn max	kg	250	500	1,000	1,500	2,500	3,750	5,000	7,000
Rope diameter max. (DS)	Ø mm	5	6	8	10	12	14	16	20
Groove base diam. of rope pulley (DR)	Ø mm	75	90	120	150	180	210	240	304
Outer diameter of rope pulley (DA)	Ø mm	100	115	150	185	220	260	295	374
Bolt diameter (DB)	Ø mm	15	20	30	35	40	50	60	70
Hole spacing (L)	mm	80	95	130	160	195	230	250	325
Hole diameter (DL)	Ø mm	9	13.5	15.5	17.5	22	26	33	39
Sheet thickness (S)	mm	5	6	8	10	12	15	15	20
Width (B)	mm	104	130	169	204	250	294	330	421
Height (H)	mm	124	144	188	231	274	326	365	462
Weight approx.	kg	2	4	8	14	23	42	55	110
Rope pulley block ULRB	Order No.	H68051	H68061	H68081	H68101	H68121	H68141	H68161	H68201