

HOSE REELS | SERIE 808/809

The series 808/809 open hose reels are made of powder-coated steel and have been designed for work with air and water for applications involving pressures of 20 bar.

These reels feature an encapsulated, lifetime-lubricated and robust drive spring, permitting several stop options on each complete turn.

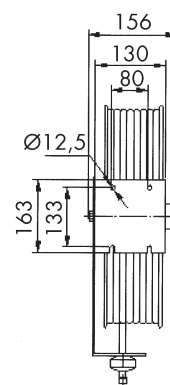
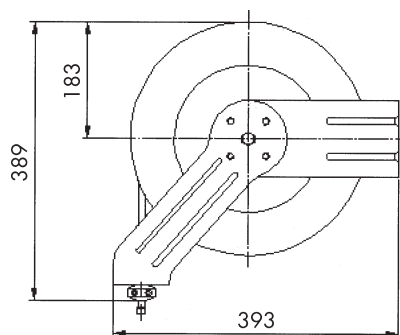
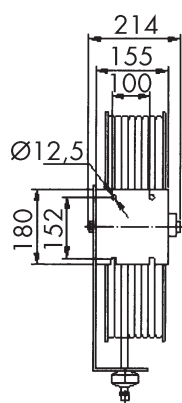
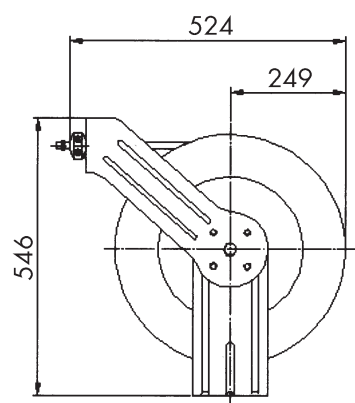
The flexible hose extension arm creates various assembly options.

Four guide rollers minimise hose wear. The reel is equipped as standard with a rubber hose, suitable for liquid temperatures of up to 100°C.



L-809

ACCESSORIES:
Swivelling wall
mount



L-808

TYPE	Fitting inch	Nominal size of hose DN	Length	Pressure max. bar	Medium	Weight kg	Order No.
L - 809-102	1/4"	6	10	20	Water, Air	11.9	G40012
L - 809-103	3/8"	9	10	20	Water, Air	12.8	G40013
L - 808-203	3/8"	9	20	20	Water, Air	22.4	G40021
L - 808-204	1/2"	12	20	20	Water, Air	28.4	G40022
ACCESSORIES: Swivelling plate for wall mounting 808 made of steel							G40010
ACCESSORIES: Swivelling plate for wall mounting 809 made of steel							G40046

Other versions and hose lengths available on request!