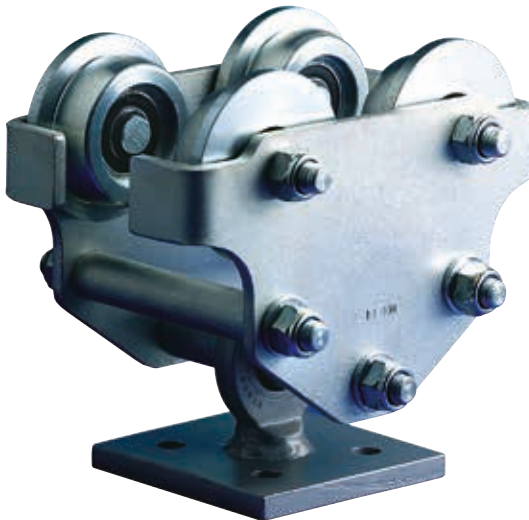


Operation and Maintenance Manual

Trolley KN

Installation - Operation - Maintenance



IMPORTANT – READ PRIOR USE!

PLANETA-Hebetechnik GmbH • Resser Str. 17 & 23 • D-44653 Herne
Tel. +49 2325 9580-0 • Fax +49 2325 77077 • info@planeta-herne.de • www.planeta-hebetechnik.de

© Reprint, also in extracts, only with written permission of PLANETA-Hebetechnik GmbH
05-03-01-0000-0818-00-BA-EN-PLA

Table of content

1. Introduction	
2. Name plate	
3. Safety precautions	
4. Working	
5. Installation	
6. Periodic inspections, Repair and Maintenance	
7. Spare part lists	
8. Annual UVV-testing	
EG-DECLARATION OF CONFORMITY	
EG-DECLARATION OF INCORPORATION	
Notes	

1. Introduction

Some important points to start with: This manual provides instructions for safety and reliability of your hoist and trolley. It is not a substitute for the accident prevention regulations (UVV) of the German Berufsgenossenschaft or all the other numerous standards which are different in other countries. You have to know all these regulations when operating this hoist or trolley! We suppose that all these local rules will be substituted by European regulations since the E.C. has one common market. But the sense of any regulation is the same:

to prevent accidents!

Please, follow the rules for country specific regulations.

In the German area, the currently valid operational safety regulations as well as The regulations of the Berufsgenossenschaft DGUV.

PLANETA hoists and trolleys are intended to be safe and reliable assistants. For this reason, we have written this operation manual. But it's only serving its purpose in the hands of the user. It is worthless in a hidden file. If you need further copies, we shall be pleased to forward them. Mind these instructions also in regard of your purse: wrong maintenance, improper use or accidents owing to miswatching of regulations exclude our guarantee and liability.

To maintain working safety, repairs may only be carried out by trained mechanics and only original Planeta-spare parts should be used. It is important that only Planeta-trained mechanics perform such repairs; they know which and when spare parts have to be changed. The installation of foreign spares is a safety risk and results in loss of guarantee.

55- our agencies and service points are at your disposal at any time. Ask first your distributor where you bought the hoist. His name should be on a sticker at the hoist, or have a look in the invoice. If you cannot locate his name, we are pleased to help you by mentioning of fabrication number.

Our emergency call number in Germany:

+49-2325-9580-0

To order original-Planeta-spare parts please refer to the spare parts list belonging to this manual. It is important to note that after any maintenance or repair work, all functions must be checked before putting the hoist back into service. If you follow these instructions, you will always be satisfied with your PLANETA-equipment.

2. Name plate

There are, of course, some spare parts with wear which have to be replaced after a longer operation period. We recommend to fill in at once the following table to assure that you get the correct parts in future. Mostly the lifting hoist or trolley has passed later a tough job and you cannot read the numbers or letters. Take the important data from the name plate or from your test certificate. Please use only our spare parts list to order parts and mention the correct spare part number.

Model	Serial-No.
Capacityt	Year
Liftm	Chain

Since the quality of the product is being continually improved and alterations or inventions should be latest state of art, changes of design are reserved by us without prior information. If this manual differs in unimportant points from the real version of your hoist, we kindly beg your pardon. The next print will include this modification. But if you mention us the serial number, year of manufacturing or other typical design details, we should be able to find out the proper part which you require. For further information in English language please order our English manual.

3. Safety remarks

Some works and some way of operations are not allowed with the chain hoist and trolley of any type because they may destroy the hoist or trolley or they can do invisible damage and a later sudden accident. They also will bring danger for life and health of the operator. So remind:

- Transportation of persons is strictly forbidden.
- Do not drive loads hanging in trolley hooks above persons.
- Do not pull attached loads under angle or aside. Only vertical lifting and lowering and horizontal movements are allowed.
- Do not try to force sticking loads.
- Do not attach overload willingly.
- Never leave a suspended load unattended.
- Never run chains over sharp edges and around corners. Use a sheave!
- Do not use lifting chain as a sling.
- Chain hoist with push or geared trolley has to be moved by hauling the hand chain or by pushing against the load or the bottle hook. Never pull or tear simply the hand chain.
- Don not drop a load into the slack chain or hook.

General safety instructions

We have pointed out already in the introduction how important it is to mind all points of this instruction. You should especially be aware of the regulations and laws in connection with the product liability and insurance requests.

- The Operation and maintenance manual has always to be within reach to the place of action. It contains important and essential aspects and extracts from the relevant standards and precautions. Any non-observance of the guide lines and hints out of this manual may lead to injuries or even to death of a user of hoist or other innocent persons.
- In addition to this operation and maintenance manual there are National standards, laws and common safety senses to mind and to follow. Have also pollution and accident prevention regulations in mind! It could also be your obligation to wear special protection suits or to use special tools and safety devices for handling of dangerous loads.
- Any working with this hoist and trolley assumes and implies the observance of the local accident prevention regulations and the consequently action according these regulations.
- Even then, following up all of this, there could be more danger from untrained or not special advised workers using this hoist/trolley not in the sense of its originated purpose. Please make sure that only people with education and clear senses will use it.
- Please add to this chapter the instructions given by your company, i.e. regarding daily inspections, test procedures, working processes, records, and all instructions you think that they are helpfull to prevent accidents.
- All staff who will work with this lifting equipment must read this booklet prior the use of the hoist, especially the chapter about the safety instructions. During the operation its too late! This is valid especially for the use of hoists only through inspection periods or when doing seldom maintenance work with the hoist.
- Responsible personal shall check frequently whether the staff working with the hoist is doing it according to all safety instructions.
- The owner of the hoist or of the company and his management are responsible for the good condition and for completeness of all necessary safety devices at the hoist and that it is used only in a safe manner. The Test booklet must be properly held and it has to contain the anual inspection check. We recommend to sign a maintenance contract with Planeta-Hebetechnik GmbH who can inspect, maintain and repair your equipment periodically.
- Please set any chain hoist or trolley out of order if a failure appears in fuction. Call for designated help!

- The personal who works with the hoist, shall not bear long open hair, loose suits or jewels including rings. That could effect danger of injuries or that something can be pulled into the hoist.
- Safety tags, stickers and other attached instructions at the hoists like name plates are not allowed to be replaced, removed or overpainted. All written, printed or stamped letters and safety instructions have to be held in good readable condition. Use grease or other protection if necessary!
- **Important:** If this hoist or this trolley was made for manual powered operation, you are not allowed to power it by a motorized device without prior allowance of the manufacturer. For example: the use of an electric hand drilling machine is not allowed to be used at a reel chain wheel.
- **Here add company safety advises:**

4. Operation

Test before use

- Please check whether the supplied hoist is in accordance with your purchase order, check completeness and tightness of all bolts and nuts.
- Make sure that there occurred no damages during transportation.
- Copy and write down the date from name plate into your operation manual after inspection of the hoist and trolley.
- Take fully care that the maintenance and operation manual is in reach of the personal who works with the hoist or make sure that the supervisor has it at hand to instruct the personal.
- Check or recalculate whether the supporting construction (beam, clamp etc) in which the trolley or hoist hangs is in full compliance with the necessary capacity.
- If you are in doubt, please call for help of a construction engineer for statics.
- Chain hoists hanging in a trolley or even incorporated in a trolley, are cranes. They have to comply with special standards and safety regulations (BGV D6 in Germany). They have to be checked by a “crane expert” prior use. We can help you with such an expert upon your request. Please do not hesitate to contact us under the phone number on page 1.

Installation hint

- Do not use the hoist and trolley without corrosion protection (grease) under free sky or leave it there.
- If it is necessary that the unit has to be used outside, we recommend to construct a little “hut” or only a roof like a “car port” to protect the unit against rain and other environed aggressive influences. A new PLANETA-hoist is not restricted in use outside or under the described conditions, but during the operations while chains move and wheels drive, there will be wear on metal parts where corrosion can take effect. This is not a warranty claim! Mainly high temperatures, high air moisture, acid atmospheres, poison steams or high dust pollution are the major reasons why a hoist can get wear and can get a shortened life time. Mechanical moving parts are mostly affected. Watch these parts generally and keep them greased and maintained whenever it seems to be necessary.
- When your unit will be used daily and it is important that it functions absolutely for sure, please buy a spare unit to have it at hand in case of trouble. This avoids down time in your production.
- Do not allow the unit and chain to be exposed to extremely cold whether. Do not apply loads to a cold chain. Temperatures lower -20°C or higher than $+60^{\circ}\text{C}$ may decrease the safe working load. Call manufacturer if in doubt!

5. Installation

Prior delivery, all units have been lubricated, tested with full load and overload and they received a test certificate.

The distance and carrying bolts of the trolley are equipped outside with distance sleeves/discs which could be released after displacing of the nuts. Then move the side plates as far as necessary to the outside that the trolley can be lifted from beneath over the beam flange. Now push the trolley side plates in direction to the beam flange until the wheels fit correctly the beam flange. Tighten the distance sleeves and the nuts again. See table for torque. If the beam is open at one end, it is easier to roll the trolley from there directly on the beam. Once the trolley is installed, move it for first test. Hand chains should hang down proper and freely and should not have any kinks or twists. After this worked fully satisfying and safe, you can start with the normal operation of the trolley.

Nut	Torgue (Nm)
M10	26
M12	45
M16	110
M20	210
M24	365
M30	725
M36	1265

Special remarks for trolleys if they were ordered for adjustable beam sizes:

- Each trolley and all its functions are tested in fully assembled version before it leaves the company. The length of the hand chain is installed according the requested lifting height (1 m less from lift) or according your special request in purchase order. Your mentioned beam size will be recognized and adjusted according your order. In most cases, the trolley is not adjustable. You may have it ordered with adjustability, then we trust that the trolley will be for various beam sizes in the range of possible static calculations. We will supply the trolley unadjusted or unassembled.
- Please mind following remarks before you put the trolley into service:
The true dimension of the beam flange has to be measured and the width of the trolley wheels has to be adjusted according this:
Runway-Beam flange width + ca. 2 mm = trolley wheel gauge in mm
There are distance discs and distance pipes on the carrying bolts of the trolley. The required gauge of trolley can be reached by taking away or adding of these distance elements. This mooves the side plates closer or wider to the beam flange. It is important that the nuts will be tightened properly. This job has to be done symetrically so that the bottle load hook will be afterwards directly centered under the beam flange. The distance discs which are not needed, shall be used outside!
- When the wheels have its correct position and the gauge is checked, put the big disc and then the small distance discs outside on the bolt and fix them with the nut.
- After this last check, the trolley can be rolled on the beam flange at the beam end. If this is not possible because the beam is closed or too narrow, the trolley has to be disassembled as discribed under item 5. Again: Please tighten the locking nuts properly and check that they will not loosen by itself when the trolley drives on the beam.

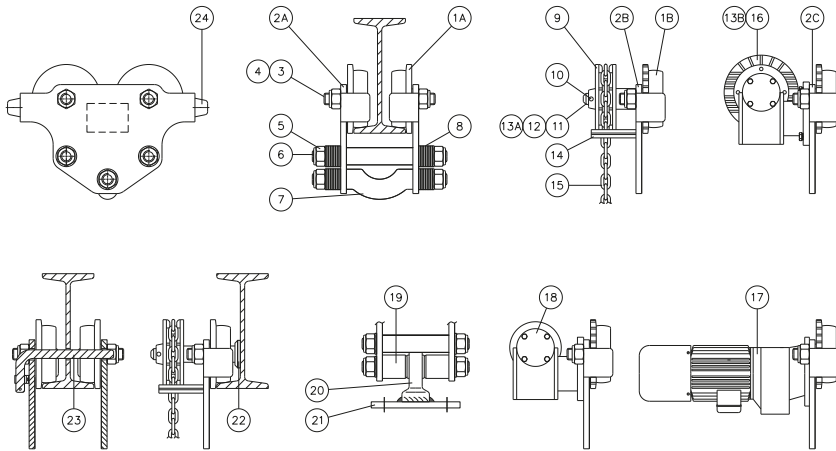
- A geared trolley is powered by a reel chain which is pulled downwards either at the right or at the left side. A push trolley does not have that. Take the advice of PLANETA if you use the trolley hoist under heavy circumstances or environments, because there could be special features necessary. Those circumstances could be:
 - Dusty, greasy, acid containing areas
 - Ocean climate or wet, salty areas
 - Explosion dangered areas
 - Food industry
 - Extremely high or low temperatures.
- Move the trolley only by hand power.
- No fast moving or machinery powered drives are allowed for pushing or towing of the geared trolley. Wheels and gears are made only for its originated purpose.
- Watch always the load when you drive the trolley.
- It sometimes happens that a load is too long or too wide to be lifted with one trolley hoist only. So if you have to move this part and you have to use two trolleys at each end, please chose the capacity of each trolley as big as the total weight of the load. This prevents an accident when the load swings and one hoist could get overloaded if too small.

6. Inspections, Repair and Maintenance

When you detect during the disassembling of your trolley that some parts are worn or damaged, please replace them by original new parts. The name of the spare parts are found in the spare parts list and the spare parts drawings which are attached some pages later. Please mention the correct spare part number, the description and the capacity of the trolley. If the parts are bolts please mention also flange width of your beam for which the trolley was built. If you are in doubt, send defect part to us.

Bearings of trolley wheels are lifetime lubricated. You may grease the pinion and the gear of wheel from time to time with gear grease.

7. Spare parts list



Pos.	No.	Description	Article no.
1A	2/4	Single flange wheel (push)	0305001
1B	0/2	Single flange wheel (geared)	0305002
2A	2/1	Side plate (push)	0305003
2B	0/1	Side plate (gear)	0305004
2C	0/1	Side plate (motor)	0305005
3	4	Wheel shaft	0305006
4	4	Circlip	0305007
5	10	(Nyloc) nut (spring washer)	0305008
6	2	Distance bolt	0305009
7	1	Suspension bolt	0305010
8	-	Adjust washer	0305011
9	1	Chain wheel	0305012
10	1	Spring pin	0305013
11	1	Drive shaft	0305014
12	1	Bearing house	0305015
13A	1	Pinion (geared trolley)	0305016
13B	1	Pinion (motor driven trolley)	0305017
14	2	Chain guide	0305018
15	1	Hand chain	0305019
16	1	E-motor WWK (Worm geared)	0305020
17	1	E-motor TWK (Helical geared)	0305021
18	1	Pneumatic motor WWK (worm geared)	0305022
19	1	Suspension bolt with distance bushes	0305023
20	1	Ball joint (swinging beam)	0305024
21	1	Bolting plate (option)	0305025
22	1	Single side parking device (option)	0305026
23	1	Fixing device, pin/hole (option)	0305027
24	4	Rubber bumper (option)	0305028

8. Annual UVV-testing

Type of Test	Date	Tester	Result

EG-DECLARATION OF INCORPORATION
Declaration of incorporation of partly completed machinery according to
EU directives 2006/42/EC, Appendix II B

We hereby declare,

PLANETA-Hebetechnik GmbH, Resser Straße 17, D-44653 Herne

that the partly completed machinery

Crane Trolley 11KN / 22KN / 33KN / 52KN
for Crane Capacity 1100 kg – 5300 kg

are in the standard version, including load control, intended for installation in a machine and the basic requirements of the EC Directives listed below, as applicable for the supplied scope correspond to:

EG-Machinery Directive 2006/42/EG

We also declare that the technical documentation referred to in Annex VII, Part B of Directive 2006/42/EC were created. We commit ourselves to the special documents to the above mentioned Products to submit a reasoned request to national bodies. The transmission is electronic.

This statement applies only to the above-mentioned Products. Commissioning is prohibited until it has been determined that the above-mentioned Products have been installed properly and the provisions of the above EC Directives.

Authorized to compile the relevant technical documentation:

Dipl.-Ing. Matthias B. Klawitter, CE-Koordinator,
PLANETA-Hebetechnik GmbH, Resser Straße 17, D-44653 Herne

Herne, August 2018

PLANETA-Hebetechnik GmbH



Dipl.-Ök. Christian P. Klawitter
(General Manager)

Is responsible for the completion, installation and commissioning according to the manual responsible:

Location: Date:

Responsible for:

Company:

Notizen

A series of horizontal dotted lines for taking notes.

Your responsible supplier: